

LINKS

FREE

Volume 22, Issue 08

"The Little Green Paper"

April 20, 2021

Community Links
Linking communities
Increasing knowledge
Expanding horizons
Offering opportunities.

Custom Printing:

Letterhead
Business Cards
Envelopes
Business Forms
Carbonless Forms
Note Pads
Office Supplies
Color Printing
Laminating

Vinyl

Signs, Banners, and License
Plates, Custom T-shirts, caps

Website

Installation, Setup, Configuration,
Design, Implementation, and
Maintenance

**Printed and distributed bi-
monthly by persons with
special needs.**

Editors:

Zia Partovi
Grace Peterson

Data Masters & Sales

Steven Burdick
Bobby Callison
Karen Deffenbaugh
Nikki Hamilton
Doug Stone
Stephanie Baker

Public Relations

Debbie Gray
Samantha Peterson

**Assembled at Midco Inc.
Little Green Shop &
Community Links in Chelsea**

Community Links

P.O. Box 85
Chelsea, OK. 74016
1100 Walnut in Chelsea
Phone 918-789-2862
Fax: 918-789-5296
links@links.community-options.net

LAND RUN OF 1889



The Land Run of 1889, although not without precedent in the history of the West, began the disposal of the federal public domain in Oklahoma. The legal basis for opening the Oklahoma District, now called the Unassigned Lands, came in 1889 when, in the U.S. Congress, Illinois Rep. William Springer amended the Indian Appropriations Bill to authorize Pres. Benjamin Harrison to proclaim the two-million-acre region open for settlement. Under the provisions of the Homestead Act of 1862, a legal settler could claim 160 acres of public land, and those who lived on and improved the claim for five years could receive a title.

The ink was hardly dry on Harrison's March 23, 1889, proclamation before Oklahoma settlement colonies were being formed in major U.S. cities. A multitude of impoverished farmers were not alone in their zeal to settle the Unassigned Lands, known popularly as

the Oklahoma Lands. Tradesmen, professional men, common laborers, capitalists, and politicians alike looked to the cornucopia of opportunity offered by settlement of the long-withheld lands of Indian Territory. Across the nation, prospective settlers began hitching their teams to wagons and loading aboard their families and scant worldly goods. Others saddled their fastest horses or caught trains for what they considered to be the most advantageous point of entry. "It is an astonishing thing," the New York Herald observed on the eve of the opening, "that men will fight harder for \$500 worth of land than they will for \$10,000 in money."

The Unassigned Lands, left vacant in the post-Civil War effort to create reservations for Plains Indians and other tribes, were considered some of the best unoccupied public land in the nation. The surrounding tribal-owned

lands included the Cherokee Outlet on the north, bordering Kansas; the Iowa, Kickapoo, and Pottawatomie reservations on the east; and the Cheyenne and Arapaho Reservation on the west. These too would later be opened to settlement. To the south lay the Chickasaw Nation.

In the spring of 1889 the largest accumulations of would-be settlers massed in camps at the Kansas border towns, mainly at the railroad towns of Arkansas City and Caldwell. With people being restrained there by U.S. troops, the boomer camps grew larger and larger. On the south, however, long lines of white-sailed wagons wound their way up from Texas directly to the south line of the Unassigned Lands at Purcell in the Chickasaw Nation. From that point many of the settlers moved northward up the eastern line and along the main (south) branch of the Canadian River, which formed the southern boundary of the target area. On the west, clusters of drought-stricken families from the Texas Panhandle and No Man's Land flooded to the boundary near Fort Reno and west of Kingfisher stage station. The anxious crowds at Arkansas City and Caldwell demanded and received permission to begin on April 18 their journey across the Cherokee Outlet. Following a nighttime rainstorm U.S. troops began leading long trains of settler wagons over muddy trails across the Cherokee Outlet toward their "promised land." One memorable event during the Arkansas City exodus occurred when the contingent crossed the flooded Salt Fork of the Arkansas River. They tore boards from a nearby Santa Fe Railway station and planked the railroad bridge that spanned the river. Settlers then unhitched their teams, pulled their wagons, and led their horses across the bridge.

The Caldwell crowd, a harmonious and happy conglomeration of ten thousand farmers, cowboys, and old soldiers in buggies, wagons, and on horseback, helped one another ford the Cimarron River before making final camp at Buffalo Springs north of Kingfisher. There on the day before the opening, Easter Sunday, they played baseball, held foot races, and conducted religious services. The frontier fellowship continued that night when the old army-camp call of "Oh, Joe, here's your mule!" circulated from one bed site to another through the darkness.

Many hopeful land-seekers at Arkansas City intended to ride in on the Santa Fe Railway line that crossed the territory through the very heart of the Oklahoma Lands. Similarly, thousands crowded the station at Purcell, filling a special "boomer train" to overflowing. Rail stations at Guthrie, Edmond, Oklahoma (City), Verbeck (Moore), and Norman, created when the line was built in 1886–87, offered high potential for townsites. Kingfisher, not then a rail town but a land office

location like Guthrie, was also a site of choice for settlers and townsite companies.

Although the opening was directed principally to agricultural allotments, many who made the run were just as interested in the attendant opportunities that came with the creation of towns and community governance. The Seminole Townsite and Improvement Company was the most prominent of several promotional ventures that had been formed. This entity, founded by officials of the Santa Fe line, enjoyed the privilege of entering the Oklahoma Lands early and surveying the townsite plats at the various stations. Further, their men were aboard the first trains, ready to jump off and begin staking their claims. But there were other groups that would likewise conduct townsite surveys, the result of which would be the selling of conflicting town lots to buyers and creating added havoc in an already chaotic situation. Oklahoma City, Edmond, and Guthrie were all so affected.

Some who made the run sought to beat others to choice homesteads by entering early and hiding out until the legal time of entry. These people came to be known as "sooners." The hundreds of legal contests that arose from this practice would be decided first at local land offices, then by the Department of the Interior. Argument would arise over what constituted the "legal time of entry"—sun time at high noon, or meridian time. In theory, the rush for land would be monitored by U.S. troops. By fact, however, the thinly manned armed force maintained surveillance over only a small portion of the extensive perimeter of the Oklahoma Lands. The troops that escorted the Caldwell and Arkansas City overland caravans monitored the line on the north. Troops were likewise stationed west of Kingfisher and on the line at Fort Reno. A cavalry troop from Fort Sill arrived at Purcell on the day before the run, far too late to contain the settler mass from spreading out to unmonitored points, like 7-C Flats, along the eastern and southern boundaries.

The largest accumulations of contestants were at the line north of Mulhall and Guthrie, north of Kingfisher, and at Purcell. But thousands of others surrounded the Oklahoma Lands at other sites independently and in small conclaves. Not a few entered the run area ahead of time, joining the railroad men, carpenters, teamsters, woodcutters, soldiers, and federal officials. Many of the latter were considered to be "legal sooners" by virtue of their working in some capacity for the government. Among the most notorious to take advantage of their authority were U.S. marshals and their deputies. April 22, 1889, dawned bright and clear upon the estimated fifty thousand people who surrounded the Unassigned Lands. As noon approached, horsemen and wagons crowded forth to positions on the line, among them

a few hardy women. Because of the social restraints of the day few African Americans were at the front, though many came in immediately behind the initial rush and were rightfully "Eighty-niners." The great dramatic moment came when at the stroke of noon starting signals were given at the many points of entry. In some instances it was given by a blue-clad military officer firing his pistol or by his trumpeter, at times by a citizen firing his rifle in the air, or, as at Fort Reno, by the boom of a cannon. All produced the same results—a tumultuous avalanche of wagons and horse-men surging forward all in one breathtaking instant. Families that remained behind at the line cheered as a husband or father made his wild dash to choose his 160 acres. He would then determine its range and township from the surveyors' cornerstone markers and plant a stake bearing notice of his name and location. Some would immediately begin making token improvements such as digging a well or arranging logs for a potential home. Others would hurry to the land office to register their claim.

The first of eight land-rush trains from Arkansas City, each loaded to the ceiling inside and atop with anxious contestants, reached the north line behind the opening charge. The train arrived in Guthrie at 1:25 p.m. to find the newly born town already brimming with people. "Looking like a giant centipede with hundreds of arms and legs and heads sticking out everywhere," the double-engine boomer train from Purcell arrived at Oklahoma Station at 2:10 p.m.

April 22, 1889, was a day of chaos, excitement, and utter confusion. Men and women rushed to claim homesteads or to purchase lots in one of the many new towns that sprang into existence overnight. An estimated eleven thousand agricultural homesteads were claimed. There would be many hardships ahead, and many would be forced to contest others who claimed the same farm or lot. A few sooner contests made it to the U.S. Supreme Court. One precedent-setting case was *Smith v. Townsend* (1892), claimants at Edmond Station, in which it was determined that Alexander Smith, a Santa Fe worker, had acted illegally in making his run from the railroad right-of-way. The high court's ruling in this matter eventually caused many old boomers, such as William Couch and his family, to lose valuable claims in Oklahoma City and elsewhere. But April 22, 1889, was nonetheless a significant day in national history, one that gave birth to new hope for thousands of Americans and became an iconic image in the history of the West.

By setting the stage for non-Indian settlement of other sections of Indian Territory, the Oklahoma Land Run of 1889 quickly led to the creation of Oklahoma Territory under the Organic Act of 1890 and ultimately to

the formation of the forty-sixth state of the Union, Oklahoma, in 1907.

DATA MASTER: Nikki Hamilton

John's Body Shop

Collision Repair Professionals

Excellent Color Matching Unibody And Frame Repair
Glass Replacement Insurance Claims Welcome

johnsbodysshop85@att.net **Chelsea**
918-789-3184 **Johnny Parks**

We Repair It Right The First Time



Cherry's Chouteau Mall

Antiques, Collectibles, & Primitives

704 S. Chouteau Ave.,
(Hwy 69 - 1 Mile North of Hwy 412)
Chouteau, OK 74337-2815

918-476-8858
email: cherrysmall@fairpoint.net

Open Daily 10-6

***** We buy one piece or entire Estates *****



DUTCH PANTRY

BUFFET & BAKE SHOP

Craft Items Available

HOURS: Thurs. - Sat. - 8:00am - 9:00pm
Mon., Tues. & Wed. - Until 8:00pm

918-476-6441

Main & Railroad
Chouteau, Ok 74337

VERNON DETWEILER





Community Options, Inc.

website is operational

Pay a visit to our website to learn about what we are doing and how you can help others by getting involved.

If you are seeking employment you can apply for your desired position with us online.

our website can be accessed at:
<https://community-options.net>

Top Places for Eagle Watching in Oklahoma

Each winter you can follow Oklahoma eagles on a path to adventure with these handy eagle viewing tips and this list of top statewide eagle watching hot spots.



As the chilly veil of winter spreads across the plains, hundreds of bald eagles make their way to Oklahoma. The winter months are the perfect time to head out on a crisp, clear day in search of the approximately 800-2,000 magnificent eagles that call the Sooner State home during the season's peak. Migrating south to Oklahoma from Canada and the northern states in search of warmth, these noble birds join nearly 80 pairs of bald eagles that are year-round residents of Oklahoma, creating a birder's paradise filled with boundless eagle-viewing opportunities.

The bald eagle's trek into Oklahoma begins in November and early December, and peaks in January and February, when numerous bald eagle watching events pop up around the state to take advantage of the increased numbers. Primarily a fish-eater, the bald eagle prefers to settle near Oklahoma's lakes and rivers for easy access to food. Groups of eagles will rest together, or "roost," in trees along the shores, with the same roost trees being used each year. With seven foot wingspans and bright white crowns, the grand size and distinguished appearance of these birds make them easy to spot and watch. As birders have long known, watching a bald eagle in its daily routine is awe-inspiring.

Eagle Viewing Tips

The best time to observe eagles is around sunrise or sunset.

Wear warm, neutral-colored clothing and appropriate outerwear. Winters in Oklahoma can be cold and windy, so bring along a warm coat, gloves, hat and scarf.

Bring binoculars, a camera (preferably with a zoom

Since 1919
WILKERSON
REAL ESTATE

Buy • Sell • Rent • Manage

Bus: 918-825-1514
Fax: 918-825-1530

100 S. Adair
Pryor Creek, OK 74361

www.wilkersonagency.com
wilkersonrealestate1919@gmail.com



PIZZA CORRAL

Daily Lunch Buffet


Dine In * Take Out * Drive Thru *

Pizza * Sandwiches * Salad Bar * Pasta

476-4507

HWY 69 South, Chouteau, OK

Look Good, Feel Good, Do Good.



Est. 1968

Daily 9AM - 6PM
Thursday until 8PM
Closed Sunday/Go to Church

Jerry Feese
Jim Timmerman
918-341-6433

NE-Mar Center
987 W. Will Rogers Blvd.
Claremore, OK 74017

Men's Casual or Dress Clothing and Accessories
Tuxedo Rental Available

lens), and a field guide to help you identify eagles and other bird species you may find along the way. For some of the eagle-viewing events, a portable camp chair or lawn chair is recommended.

Always call ahead to state parks or wildlife management areas for up-to-date eagle viewing information before your trip.

Eagle Viewing Hot Spots

Sequoyah National Wildlife Refuge

Bring your binoculars and hiking boots to the Sequoyah National Wildlife Refuge and venture out to spot southern bald eagles on the nest. Located along the upper half of the Robert S. Kerr Reservoir south of Vian, the refuge is known for its winter eagle sightings along numerous hiking trails and observation areas scattered throughout the park. This picturesque area of northeast Oklahoma is a haven for a variety of wintering birds and wildlife with plentiful shoreline, river bottoms and wooded swampland.

As an added bonus, visitors are invited to sign up for the annual Eagle Tour & Loon Watch events, which take place weekly from late January to early March. Start the tour by viewing the refuge's live webcam which documents the lives of the eagles that occupy a nearby nest. Operated by the George M. Sutton Avian Research Center, the webcam documents the adult bald eagles, their eggs and eaglets. Observe the eagles on the webcam and then take off on the park's 25-person tour bus to go search for them in the wild. Afterwards, head over to neighboring Tenkiller State Park for more eagle and loon watching.

Keystone Lake & Keystone State Park

A favorite fishing area for migrating bald eagles, Keystone Lake consistently attracts eagles each winter to its eastern shores. Located on the Arkansas River about 23 miles west of downtown Tulsa, Keystone Lake and Keystone State Park offer numerous opportunities to see eagles as they dive for fish around Keystone Dam or as they soar above the park's lakeside, wooded hiking trails. Make your way over to the Eagle Overlook Platform in the Brush Creek area below the dam to watch as these elegant creatures capture fish in the calm waters of the lake.

Lake Thunderbird State Park

Lake Thunderbird State Park, situated within the bald eagle migration corridor in Norman, hosts roosting eagles between the months of December and February. Attracted by the rolling, oak-covered hills that surround Lake Thunderbird, eagles flock to the park for shelter and a stable food source. The annual Eagle Watch events are held on select Saturdays during peak



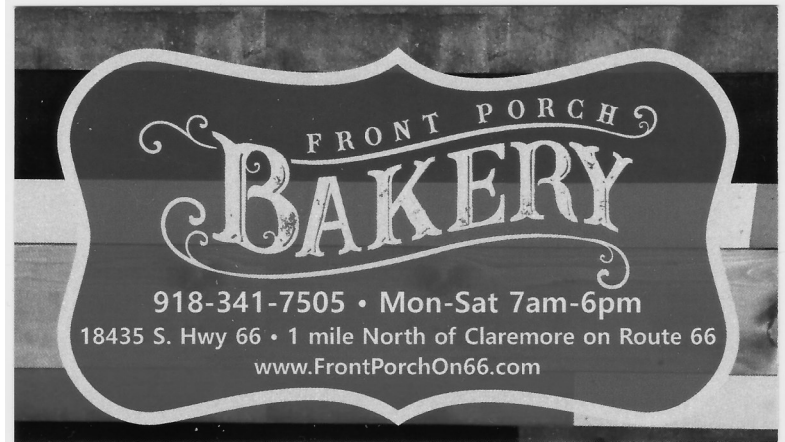
OIL & PROPANE CO.

"Rogers County's oldest name in propane"

CARY FROMAN
Vice-President

341-4434

Box 1166
Claremore, OK 74018



918-341-7505 • Mon-Sat 7am-6pm
18435 S. Hwy 66 • 1 mile North of Claremore on Route 66
www.FrontPorchOn66.com

HALE BAIL BONDS

"Need A Bail Call Hale"



**You Ring,
We Spring!**

DAVID HALE
"BUMPER"

918-341-1283

PO BOX 727 • Claremore, Oklahoma 74018



Community Options, Inc.

website is operational

Pay a visit to our website to learn about what we are doing and how you can help others by getting involved.

If you are seeking employment you can apply for your desired position with us online.

our website can be accessed at:
<https://community-options.net>

months, but are limited to 40 guests, so make your reservations early.

Treat yourself to a leisurely stroll along the park's trails to seek out the birds yourself, or sign up for an official eagle watch and enjoy an informative session in the park's Discovery Nature Center before journeying to several eagle-watching hot spots throughout the park with the aid of a trained guide.

Chickasaw National Recreation Area

The Chickasaw National Recreation Area, a picturesque oasis of outdoor splendor in southern Oklahoma, plays host to a remarkable number of bird species, including the wintering bald eagle. Aided by the park's proximity to the central flyway and unique location as a transition point between Oklahoma's eastern hardwood forests and western grasslands, the area consistently attracts eagle populations to Sulphur during the winter months.

Walk along the park's freshwater streams and the shoreline surrounding the Lake of the Arbuckles to view these roosting visitors, or attend the park's annual Bald Eagle Watch for access to the area's optimal viewing areas. The eagle watch begins with a ranger-led program at the Travertine Nature Center and continues with a caravan to search for eagles in the wild. As the afternoon winds down, return to the center to share your viewing experience with fellow visitors while warming up by the fireplace.

Salt Plains National Wildlife Refuge

Northwestern Oklahoma's 32,000-acre Salt Plains National Wildlife Refuge includes 10,000 acres of salt flats, as well as wetlands, prairies, woodlands and Great Salt Plains Lake. This diversity of landscape has contributed to the area's success as a habitat for over 300 species of birds. Designated as a Globally Important Bird Area by the National Audubon Society, the refuge and nearby Salt Plains State Park are excellent destinations for birders, and are prime locations for eagle viewing during the winter months.

Travel along the refuge's Sandpiper Trail, which begins near the nature center and refuge office, and take a short journey to the edge of the salt flats for eagle viewing from the trail's birding observation platform. Also, eagle watchers won't want to miss a trip along the 1 ¼-mile Eagle Roost Nature Trail for an adventure through wooded and open areas, beneath cottonwood trees and past marshes to a bird watching area along Sand Creek Bay.

Arcadia Lake

Located in central Oklahoma between the cities of Edmond and Arcadia, Arcadia Lake offers 26 miles of shoreline that attract bald eagles with plentiful trees

and woodland areas, as well as excellent fishing beneath the lake's still waters. Each year, lake visitors are invited to join the Arcadia Lake Eagle Watch, historically held in January. The event begins in the Arcadia Lake park office, where visitors can see a wingspan display, watch videos about eagles and learn more about the graceful birds before venturing out in search of them on the grounds around the lake. Spotters are available to help visitors find the birds, whether in roosts or soaring over the lake in search of food.

Quartz Mountain State Park

Eagles begin to arrive at Quartz Mountain State Park toward the end of December and remain residents until they depart the Lone Wolf area after the first of March. Head out on the trail and search the tall cottonwood trees located on the northern shore of Lake Altus-Lugert or on the southwest face of Twin Peaks, two areas where the eagles commonly roost. Cast your gaze skyward an hour after sunrise or an hour before sunset to increase your odds of spotting an eagle soaring above the park, or head over to the dam, where eagles are often seen fishing.

Black Mesa State Park & Nature Preserve

Located in the panhandle of northwest Oklahoma, Black Mesa State Park & Nature Preserve offers a glimpse of the golden eagle. Like the bald eagle, the golden eagle migrates to Oklahoma during the winter, but chooses to reside in the far western part of the state amidst the area's cliffs and cottonwood trees. Instead of eating fish like the bald eagle, the golden eagle feeds on small mammals such as jackrabbits and prairie dogs, making the arid, rugged landscape of Black Mesa State Park an ideal choice for its winter habitat. Hike along the nature trails that wind throughout the park and keep your eye out for the golden eagles that often glide overhead, or take your camera to the banks of Lake Carl Etling, located within the park, to snap photos of the eagles that call the shoreline home.

DATA MASTER: Karen Deffenbaugh



Kids Dinosaur Jokes

What should you do if you find a dinosaur in your bed? Find somewhere else to sleep to-night.



Why didn't the dinosaur cross the road? There weren't any roads when dinosaurs were alive.

What do you get when a dinosaur sneezes? You get out of the way.

How do you know if a dinosaur has been in your freezer? Look for their footprints on the frozen pizza and their tongue imprint on the ice cream.

Do you know how long dinosaurs should be fed? The same amount of time it takes to feed short dinosaurs. (Ba Da Bing).

What makes more noise than a dinosaur? Two dinosaurs.

What's as big as a dinosaur but has no weight whatsoever? The dinosaur's shadow.

DATA MASTER: Doug WM Stone

LEGO Back to the Future

LEGO Back to the Future is a 2015 action-adventure LEGO game following the storyline of the Back to the Future franchise developed by TT Games and published by Universal Studios. The game plays similar to other LEGO titles, having multiple puzzle-solving and adventure sequences. LEGO BTF implements an open world map, similar to the of LEGO Marvel Super Heroes, allowing the player to roam around the entirety of Hill Valley in any of the five time-settings; the 1980s, the Old West, the 1950s, 2015 and the alternate 1985.



DATA MASTER: Doug WM Stone


STILLWATER MILLING Co.

A&M

FEEDS

MORE THAN JUST A FEED STORE

721 W. 6th Claremore 341-0933
Open: M-F 8-6 & Sat 8-5



"I am glad a friend told me about..."

GRAND PROSTHETICS

& Orthotics

Lightweight

ARTIFICIAL LIMBS & BRACES

FREE CONSULTATIONS

(918) 786 4626 www.GrandPro.com
5 East 14th St Grove Ok 74344

PARKS

CUSTOM CABINETS

Bruce Parks
918-789-2694
918-637-2106 Cell
918-283-7030 Fax

7454 South Hwy 28
Chelsea, Oklahoma 74016
Bruce@ParksCustomCabinets.com
www.ParksCustomCabinets.com

Here's How Easter Sunday Is Determined Every Year

Jennifer Aldrich, Erin Cavoto

Here's How Easter Sunday Is Determined Every Year



Easter Sunday changes dates year-to-year. This year, Easter is on Sunday, April 4, 2021.

The holiday coincides with the vernal equinox, which welcomes spring in the northern hemisphere.

All of the celebrations leading up to Easter also change dates. Springtime is a welcomed sign after the long days of winter: warmer weather, freshly sprung flowers, and, for those who celebrate, the arrival of Easter Sunday. Unlike Christmas, which falls on the same date each year, Easter and the celebrations leading up to it change dates every year. So you may find yourself wondering how the date of Easter is determined. So we're answering your burning questions about why Easter changes dates.

Of course, to know when Easter is this year, you can figure it out by taking a step back and figuring out Ash Wednesday's date. The main event occurs six and a half weeks after Ash Wednesday, encompassing the 40 days of Lent. But to discover what causes all these dates to fluctuate year after year instead of staying in one place like many other annual holidays including Christmas, Valentine's Day, and St. Patrick's Day, you might want to look to the sky for your answer. We've investigated the reasons behind the ever-changing date, which includes the phases of the moon, the vernal equinox, and the Gregorian calendar. You might not have realized just how much goes into how Easter Sunday is determined each year!

How is the Easter date determined every year?

First off, it's important to know that though the exact date of Easter changes each year, there's a definite period in which the day occurs, and that's March 22 through April 25 (in the Gregorian calendar, not the Julian calendar). Easter always occurs on the first Sunday after the Paschal

Full Moon (the first full moon that occurs after the vernal equinox, which signifies the beginning of spring in the northern hemisphere), according to The Old Farmer's Almanac.

In 2021, the vernal equinox falls on March 20, 2021, making the first full moon after that date March 28 and the following Sunday—April 4—Easter 2021.

What dates are the Easter holidays in 2021?

Although Easter is the main event, the holiday has several important commemorations leading up to the holy day. This year, things kick

off on Wednesday, February 17, when churchgoers head to their local congregations to observe Ash Wednesday. On this day, priests and pastors smear ashes from the previous year's Palm Sunday palms on the attendees' foreheads. They do this while repeating Genesis 3:19, which says, "...for you are dust, and to dust you shall return."

Ash Wednesday marks the beginning of Lent. The meaning of Lent is to be "encouraged to find our own method of confronting our sinfulness, remembering our mortality, and giving thanks for the gift of salvation we receive through the life, death, and resurrection of Jesus Christ," according to the United Methodist Church's website. Many people choose to give up something or give themselves to charity during the 40-day-long celebration.

Lent comes to a close during Holy Week, which begins with Palm Sunday on March 28. Palm Sunday marks Jesus's arrival in Jerusalem where he was greeted with palm branches, according to the 40 Acts website.

Several days later comes Holy Wednesday, which falls on March 31 this year, and this recognizes Judas Iscariot and his plot to double-cross the savior. The next day—April 1, the end of Lent—is Holy Thursday, the anniversary of the last supper. Good Friday, on April 2, is celebrated next, and that commemorates the crucifixion of Jesus Christ. The week comes to a close on Easter Sunday, which is April 4, when Jesus rose from the tomb.



DATA MASTER: Steven Burdick

Simply Funny

Steps For Mommy

One of my wife's third graders was wearing a Fitbit watch, which prompted my wife to ask, "Are you tracking your steps?" "No," said the little girl. "I wear this for Mommy so she can show Daddy when he gets home."

—James Avery

Potty talk

"Here," says the nurse, handing the patient a urine specimen container. "The bathroom's over there." A few minutes later, the patient comes out of the bathroom.

"Thanks," he says, returning the empty container. "But there was a toilet in there, so I didn't need this after all."—Travis Stork, MD, Nashville, Tennessee

Overheard in the doctor's office

As I leaned in to check her eyes, my older patient got a little frisky. "You remind me of my third husband," she said coyly.

"Third husband?" I asked. "How many have you had?"

"Two." —Leon Pendracky, OD, Avella, Pennsylvania

Ignorance is bliss

My patient announced she had good news ... and bad.

"The medicine for my earache worked," she said.

"What's the bad news?" I asked.

"It tasted awful."

Since she was feeling better, I didn't have the heart to tell her they're called eardrops for a reason. —Murray Grossan, MD, founder of the Grossan Institute, Los Angeles

Clean up in aisle dumb

Patient: Doctor, I slipped in the grocery store and really hurt myself.

Me: Where did you get hurt?

Patient: Aisle six. —John Munshower, DO, Media, Pennsylvania

Sleep apnea dilemma

I gave my patient the results of her sleep study: "It looks like you stopped breathing in your sleep over 65 times per hour."

Her response: "Did I start back?" —Michael Breus, PhD, Scottsdale, Arizona

This deserves a surgeon general warning... for epic

4 State Insurance Agency

1921 N. Third

14 S. Elliott

Langley, OK. 74350

Pryor, OK. 74361

918-782-0500

918-825-4567

Open 9:00 AM – 5:00 PM. Monday thru Friday

4 All Your Insurance Needs

LANGLEY DRUG

1631 N. 3rd Langley, OK. 74350

918-782-3271

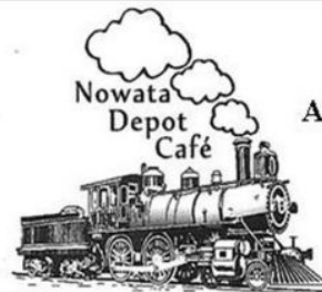
Hours:

Mon-Fri 9:00 am to 6:00 pm

Sat 9:00 am to 1:00 pm

Accept most insurances Medicare part B and D

Julia Brown, Pharmacist



Nowata
Depot
Café

Anthony M. & Lisa K. Gray
Owners

7:00am-3:00pm Sun.

7:00am-8:00pm Mon.-Thurs.

7:00am-8:30pm Fri.

Closed Sat.

127 S. Oak Street

Nowata, OK 74048

918-273-2500



Barbee's
Heating & Air Conditioning

SALES & SERVICE

State Lic. #161

HVAC

Duct Cleaning

Energy Star Duct Sealing

Energy Star Insulation

Energy Audits

Video Inspections

Dryer Vent Cleaning

Randy Barbee, Owner
Certified Energy Consultant

Cell (918) 671-4279

Office (918) 341-4983

GREEN...for your future & ours!

burns

During surgery, my fellow resident bumped heads with the surgeon.

“Ah, Dr. Jones, a meeting of the minds,” he said, laughing it off.

The surgeon mumbled, “Yes. And I felt so alone.” — Sid Schwab, MD, Everett, Washington

Always prepared

Scene: The operating room. I’m reviewing the surgical checklist with the nurses.

Me: We have the surgical equipment, the heart-lung machine, antibiotics, and the replacement heart valve on hand.

Patient: You wait until now to figure this stuff out? — Marc Gillinov, MD, The Cleveland Clinic

Medical cat-astrophe

I prescribed an inhaler for a patient’s cat allergy. He came back a week later saying he was none the better. Turns out, he was spraying the inhaler on the cat. — Source: sunnyskyz.com

Take two jokes and call me in the morning!

A doctor tells his wife, “You’re a terrible cook, you spend too much money, and you’re a lousy lover!”

Two weeks later, he comes home to find her making out with his partner.

“What’s going on here?!” he demands.

“Just getting a second opinion,” she replies.

—Submitted by Deborah Axelrod, MD, New York University Perlmutter Cancer Center

Irony in Real Life

The definition of irony: a situation that is strange or funny because things happen in a way that seems the opposite of what you expected. When it comes to finding examples of irony, life proves stranger (and funnier) than fiction. These ironic examples will raise anyone’s eyebrows and bring a laugh or two.

What’s ironic about the Bible?

In one of the most interesting irony examples, the most shoplifted book in America is The Bible.

What’s ironic about McDonald’s?

In one of the more hilarious examples of irony, McDonald’s employee health page, which is now shut down,



www.sbtmiami.com
918-542-6661

**BANK
ANYWHERE
& ANYTIME
WITH OUR
MOBILE APP**



FOUR CONVENIENT LOCATIONS TO SERVE YOU
MIAMI | NORTH MIAMI | AFTON | COMMERCE

MEMBER FDIC



Truck, Tractor & Auto
Fast Efficient Service

Sam's Tire Shop

Mon-Fri 8 to 5
Sat 8-12
(918) 256-7591
436 S. Wilson
Vinita, OK. 74301-4246

once warned against eating McDonald's burgers and fries.

What's ironic about A Charlie Brown Christmas?
Every year ABC cuts down A Charlie Brown Christmas—a movie about the over-commercialization of the holidays—to make room for more commercials.

What's ironic about Charlie Chaplin?
He once entered a "Charlie Chaplin walk" contest... and came in 20th.

What's ironic about the inventor of the stop sign?
"Father of Traffic Safety" William Eno invented the stop sign, crosswalk, traffic circle, one-way street, and taxi stand—but never learned how to drive. A prime example of irony, as he never got the chance to benefit from his own invention.

DATA MASTER: Doug WM Stone

DOLPHIN FACTS: Are Dolphins Fish?



Dolphins may swim through the water as gracefully as any fish, but they are not fish. Dolphins are mammals. This puts them in the ranks of other famous marine mammals such as whales, seals, and manatees. So why are dolphins mammals? They:

- are warm-blooded
- breathe through lungs, not gills
- give birth to live young
- produce milk for their young
- have body hair (doesn't look like it, but they do!)

Warm Blooded

Warm-blooded means that their body is able to regulate its own temperature, so they stay warm even when the water temperatures around them are cold. Some of their native environments, such as the waters of the northern Pacific Ocean, can get very chilly. In these places, being warm-blooded is a big advantage for survival. Being warm-blooded also makes dolphins and other cetaceans less prone to infections and other health conditions that affect cold-blooded species.

Vinita Muffler & Radiator

Steven Smith - MD/DHT
"Over 90 years Experience"

**Fast, Professional Work
the First Time!**

- Cat-Back Dual Exhaust
- Catalytic Converter Service
- Gas Tank Cleaned,
- Repaired, Lined & Coated
- Radiators - Plastic or Brass



(918) 256-6969

502 N. Wilson
Vinita, OK 74301

Lungs, Not Gills

Another central feature of marine mammals is that they have lungs, not gills. Dolphins, like whales, need to periodically come to the surface to replenish their air supply. They have blowholes that they close while diving, and then open at the surface for air.

Marine mammals have also adapted in some special ways to thrive in an aquatic environment. For instance, dolphins exchange 80% of the air in their lungs with each breath, while humans are only capable of exchanging 17%. Marine mammals also have a greater capacity for oxygen storage in their lungs, blood, and muscles. All of this creates a more efficient use of the oxygen in their bodies and is what allows many species to dive for extended periods of time.

Live Birth

Dolphins give birth to live young and do not lay eggs. They can get pregnant on average every two to four years once they're mature, although some species can have 5-7 years between births. Dolphin calves tend to stay close to their mothers for a few years before venturing off on their own. However, some calves will

stay with their mothers for a lifetime.

Nursing

Along with gestating their young, dolphins produce milk to nourish them. It may seem tricky for calves to nurse underwater, but dolphins have adapted some special physiological traits to work around this issue.

Body Hair

Did you know that dolphins start life with body hair? Newborn calves have hairs on their rostrum (their beak) that fall out soon after birth. This is believed to be an evolutionary remnant from when they lived on land.

Are Dolphins Intelligent?

Dolphins are considered one of the world's most intelligent animals, and they have several cognitive abilities that set them apart. Many researchers consider intelligence to be a combination of perception, communication, and problem-solving. You can see dolphin intelligence in action in the way they communicate and use tools.

Communication is a big part of how dolphins socialize and hunt. They have the ability to echolocate with a series of clicks, allowing them to find other dolphins or similar species and prey even in the low-light conditions of the ocean. They can do more, too. Did you know that dolphin echolocation allows them to detect surgically implanted metal in swimming humans? The human body is comprised of about 75% water, and once in the water, we provide a prime structure for echolocation. This is how dolphins are able to discern that the metal is denser than human flesh, which is mostly water.

Dolphins also have a complicated method of communicating with each other. From an outside perspective, dolphins may seem to communicate much like hu-

mans. However, researchers are still investigating both how dolphins communicate and what information they are able to pass to each other.

Despite lacking hands, dolphins are adept at using tools. For instance, one of their more specialized tricks is to carry a sponge at the end of their beak, also known as a rostrum. This acts like padding, protecting them from sharp rocks as they dig through the seafloor for food.

Zoological facilities, aquariums, and other places, such as Dolphins Plus, give people a way to learn more about these remarkable animals. The educated professionals who work there can share general information, threats and conservation efforts, and the latest research findings on how these animals cognitively function, communicate, and adapt. These places are both fun for the viewing public and offer a great learning experience.

How do Dolphins Communicate?

One of the fascinating things about these marine mammals is their complex methods of communication. So how do dolphins communicate? There are three main ways: whistles, echolocation, and social communication.

Dolphins communicate through more than just clicks and whistles. They can also slap the water's surface with their tail or bodies, which is officially termed breaching.

Dolphins can make squeaks, buzzes, whistles, clicks, and a wide array of other crazy noises. These whistles can be heard by others of the species from miles away. Their whistle repertoire can change as they get older, and dolphins who bond with one another can learn

D&M CONSTRUCTION & REMODELING, LLC.

Specializing in doors, windows, install windows any size

for \$150, & siding, all types of carpentry.

Metal roofing, Senior Discounts.

Licensed, Bonded, & Insured.

Dave McElhaney

417-483-4113 OR 417-529-4377

each others signature whistles and often copy each other's whistles.

Where Do Dolphins Live?

Dolphin habitats can be found around the world, from tropical to temperate regions. Although they are warm-blooded, they tend to avoid oceans near the Arctic and Antarctic. The bottlenose dolphin, one of the most well-known species, prefers water between 50 and 90 degrees Fahrenheit. However, each species has its own preferences.

Dolphin habitats can be found everywhere from open oceans to coastlines to river basins. Some species are migratory and adapt well to changes in their environment. They can move to areas in their temperature range that offer sufficient numbers of fish. Other species are closely tied to one place and come under threat when humans begin developing the area.

The Pacific Ocean

This is home to several species including bottlenose, spinner, and Pacific white-sided dolphins. Dolphins who live in the deep ocean are better adapted to tolerating cold water than their shore-loving counterparts.

The Atlantic Ocean

Here you'll find the preferred home of bottlenose, humpback, and spotted dolphins. These species have been found from Nova Scotia to Patagonia and everywhere in between.

The Indian Ocean

The Indian Ocean is the native environment for large numbers of bottlenose, spinner, and common dolphins. Off the coast of East Africa, you'll also find the highly endangered humpback dolphin.

Rivers and Seas

Dolphins are best known for living in the ocean, but there are also endangered freshwater varieties. Did you know that there are dolphins in the Amazon River? The Amazon River dolphin is comparatively small, weighing up to 350 pounds, and adults are bright pink.

Threats

Despite living throughout the world, dolphins are currently facing a lot of threats. Climate change, pollution including trash and debris, and aggressive fishing operations are impacting all species of dolphins. This is why marine mammal facilities are important for protecting and researching these animals. They are able to educate the public about these remarkable mammals, promote environmental stewardship, and give scientists an opportunity to understand the species more in depth.

Are Dolphins Endangered?

Yes, there are dozens of species of dolphin that are endangered and now extinct. Some of the most threatened species are the ones that come into contact with humans most frequently. This includes the Yangtze River dolphin, the Maui dolphin, the Ganges River dolphin, and the short-beaked common dolphin. Each of these species face significant challenges for their future.

The Yangtze River dolphin is not officially considered extinct, but there have been no confirmed sightings for nearly 20 years. What may have happened? This species could have been a victim of human development including:

- bycatch fishing (when the dolphin is accidentally caught in a fishing net)
- injuries from fishhooks and lines
- boat collisions
- the rising pollution levels in the river itself

The Maui dolphin, found off the coast of New Zealand, is a highly endangered species with (an estimated) less than 100 members left. The species decline is due to many issues, one of which is that they are very slow breeders. Most dolphins reproduce an average of every couple of years, but for this species, it's 6-7 years. They also face threats to their habitats and food sources.

The Ganges River dolphin is seen in India, Nepal, and Bangladesh. Because it lives in some of the most populated areas of the world, this species is hit hard by human impact. Some major threats include river pollution, lowered levels of river water, and dam building.

The short-beaked common dolphin is found in the Mediterranean in declining numbers. These colorful animals are endangered by fishing accidents and the increasing pollution and trash building up in the Mediterranean Sea.

How can you help? Even small changes you make can have a big impact on the future of dolphins in the world. These include:

- reducing the pollution and household waste you produce
- practice recycling
- reduce carbon emissions
- follow marine-friendly regulations when out on your boat
- support private and governmental conservation programs
- stay educated on dolphins and environmental issues

DATA MASTER: Steven Burdick



Community Links website is operational

We offer Customized Printing including Vinyl
Printing to fit your your personal &
professional needs

**Now you can place your License Plate
Tag, Sign (plastic, Metal, Magnetic), T-
shirt, and hoodie orders online.**

Order forms for **our other services** will be added to the website as they become available. If you are seeking **employment** you can apply for your desired position with us online at <https://community-options.net>. You can read the current and old issues of **The Little Green Paper** online or download them to read later. We are adding old and current issues as they become available.

You can also place ads on the website. Of course, ADs on the website can be in color and animated and they are live and attract more attention.

Now you can play GAMES

For any inquiries you can reach us at:

(918) 789-2862 or (918) 244-0457

ask for Debbie or Zia

our website can be accessed at:

<https://links.community-options.net>

CHELSEA



**FAMILY
PHARMACY**

THE PHARMACY THAT CARES

600 Walnut * Chelsea

918-789-2241

Email: chelseafp@sbcglobal.net

www.chelseafamilypharmacy.com

Joe Forcum, D. PH

Wendy Forcum

Chelsea

Tag Office

336 W. 6th * Chelsea, OK.

789-2332

Open Monday thru Friday

9am to 12pm 1pm to 5pm

and 9am to 12 pm Saturday

Marie White Agent

Claremore Nursing Home - Employee of the Month



Susan Grimmitt was unanimously elected by Resident Council as February honoree. She has been part of the Housekeeping Department for 5 1/2 years.

Born on the East Coast, Susan has been married but says, "Never again." Her 2 girls and 1 boy have given her 4 grandchildren.

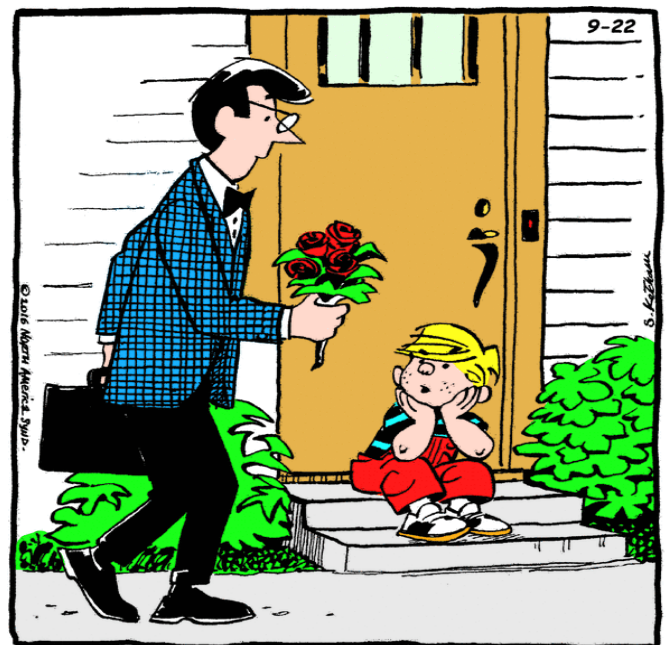
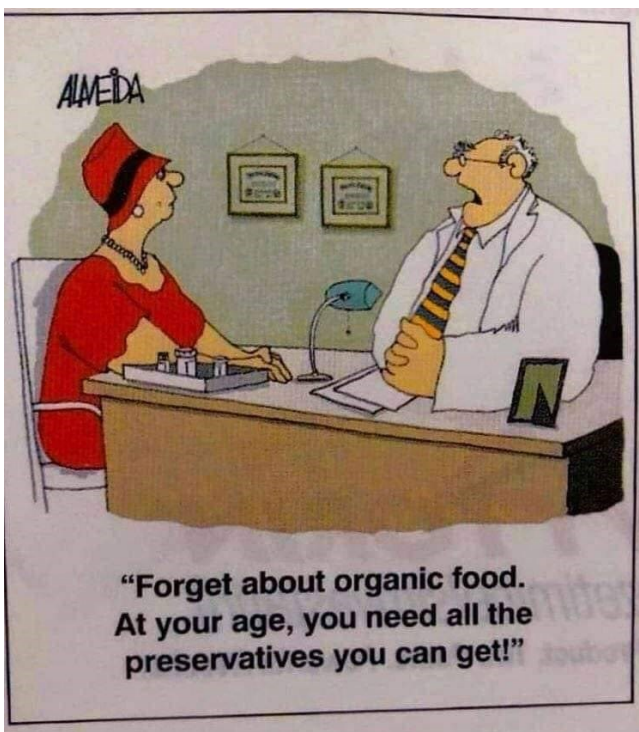
Even though she is a private kind of person with most, Susan loves the residents and takes good care of them. Her favorite thing is talking with them and listening to their interesting stories.

"They may forget your name, but they will never forget how you made them feel."

Maya Angelou

If you would like to join, "Susan Grimmitt" as a Certified Nurse Aide, please apply in person. Now taking applications for Certified Nurse Aides both days and nights. Must pass a background check. New pay scale for CNA's.

Claremore Nursing Home
920 E. 16th St.
Claremore, Ok. 74017
918-341-1717



What's the Origin of the Easter Bunny?

Easter is the Christian celebration of the resurrection of Jesus, but the seasonal chocolate eggs and the bunny who delivers them are nowhere to be found in scripture. The exact origins of the Easter bunny are clouded in mystery. One theory is that the symbol of the rabbit stems from pagan tradition, specifically the festival of Eostre—a goddess of fertility whose animal symbol was a bunny. Rabbits, known for their energetic breeding, have traditionally symbolized fertility.

Eggs are also representative of new life, and it's believed that decorating eggs for Easter dates back to the 13th century. Hundreds of years ago, churches had their congregations abstain from eggs during Lent, allowing them to be consumed again on Easter. According to History.com, in the 19th century Russian high society started exchanging ornately decorated eggs—even jewel encrusted—on Easter.

But how did the Easter Bunny begin delivering eggs on American shores? According to History.com, the theory with the most evidence is that the floppy-eared bearer of candy came over with German immigrants:

According to some sources, the Easter bunny first arrived in America in the 1700s with German immigrants who settled in Pennsylvania and transported their tradition of an egg-laying hare called "Osterhase" or "Oschter Haws." Their children made nests in which this creature could lay its colored eggs. Eventually, the custom spread across the U.S. and the fabled rabbit's Easter morning deliveries expanded to include chocolate and other types of candy and gifts, while decorated baskets replaced nests. Additionally, children often left out carrots for the bunny in case he got hungry from all his hopping.

Bunnies aren't the animal traditionally associated with Easter in every country. Some identify the holiday with other types of animals like foxes or cuckoo birds.

DATA MASTER: Nikki Hamilton

Angel Delivers a Salad

It was our first day back to school with kids. My colleague, a reading specialist named Barbara, asked how I was feeling:

Me: Hanging in there, a little tired.

Barbara: It's a lot. What do you have for lunch today?

Me: A sandwich.

Barbara: What do you like? I'll bring you something tomorrow. Do you like salad?

Me: (thinking) Wait a minute. What? She's going to get me a salad tomorrow?

Me: Sure.

Barbara: What kind do you like?

Me: I like Asian chicken salad.

Barbara: I have an extra Asian chicken salad. Let me get it.

(She disappears into her room and produces this beauty for me.)

Barbara: Here you go.

Me: "Thank you." (thinking) How did she do that? It seemed like she was Santa Claus just pulling out of her bag whatever I asked for.



DATA MASTER: Nikki Hamilton

Have you seen our amazing CD Specials?

918.788.3373

welchstatebank.com

Welch | Miami | S Coffeyville

 **WELCH STATE BANK**

Watch your money grow!

Call, visit our website, or come into any "branch" location for more details today!

See what we did there...

"branch"...

"tree branch"...

"grow!"



Member FDIC

Dr. Seuss Explains Why Computers Crash

Dr. Seuss explains computers crash. They mash you. Bash you. To no avail. Then next you wonder, ponder and guess; you must be still to comprehend. You tap the keys, you wiggle the mouse, you tap the screen but nothing's seen. You check the cord and the power strip, it's not a Ford or flower tip.

Dr. Seuss Explains Why Computers Crash

What can you do, quick as a flash, read on my friend to see the end.

If a packet hits a pocket on a socket on a port, and the bus is interrupted at a very last resort, and the access of the memory makes your floppy disk abort, then the socket packet pocket has an error to report.

If your cursor finds a menu item followed by a dash and the double-clicking icon puts your window in the trash; and your data is corrupted cause the index doesn't hash, Then your situation's hopeless and your system's gonna crash!



If the label on the cable on the table at your house, says the network is connected to the button on your mouse, but your packets want to tunnel to another protocol, that's repeatedly rejected by the printer down the hall, and your screen is all distorted by the side effects of gauss, so your icons in the window are as wavy as a souse; then you may as well reboot and go out with a bang, 'Cuz sure as I'm a poet, the sucker's gonna hang! When the copy of your floppy's getting sloppy in the disk, and the macro-code instructions cause unnecessary risk, then you'll have to flash the memory and you'll want to RAM your ROM. Quickly turn off the computer and be sure to tell your Mom!

Dr. Seuss Ponders
How did it get so late so soon?
It's night before it's afternoon.
December is here before it's June.
My goodness how the time has flown.
How did it get so late so soon?

DATA MASTER: Steven Burdick

A Little Lace for My Mum

My 89-year-old mother was visiting me. As she was helping me fold laundry, she commented on how pretty my bras were and lamented that when she started wearing bras, pretty ones weren't available. When they were available, she couldn't afford them because she and Dad were raising a family. Then she felt too old for them.

I decided to take Mum down to my local lingerie shop. A wonderful salesperson professionally fitted her for a lovely, lacey, colourful bra while telling her no woman was ever too old for va-va-voom.

Mum would have considered it frivolous to spend more than \$20 on underwear, but I bought the bra she liked the best. The smile on her face as she left the store with an elegant little bag containing a puff of lace wrapped in tissue was amazing. She hasn't stopped smiling since.



DATA MASTER: Nikki Hamilton



By: Daiga Ellaby
Las Palmas de Gran Canaria, Spain
https://unsplash.com/photos/-5KjF_u5YzI

Up-coming Events

TOPS #570 We meet 9am to 11am Monday morning at Mt. Olive Lutheran Church in Miami 2337 N. Main St. "Taking off pounds sensibly!"

TOPS #567 meet every Thursday at 10am 433 N Mississippi in Nowata.

TOPS #506 in Miami Heavenly Winds Worship Center meet every 6pm Thursday evening. For more info call Susan Walls at 918-540-0570

Every 4th Saturday of the month Veteran's Support Group: Veterans for Veterans. Have you served in the military? Are you struggling with readjustment? Anxious about the future? Struggling to connect with friends and family? Struggling with school? WE CAN HELP! Free veterans support group at 10am every 4th Saturday of the month. The Landing 502 West Corner Fairland, Ok. For more information call Cindy (918) 676-3228.

Food Truck Wednesdays —Every Wednesday, grab some tasty eats and gather on the grounds of Guthrie Green. During Food Truck Wednesdays, lunchtime transforms into a community-wide affair, with roaming food trucks posting up at this Tulsa park. While you dine on delicious food, be sure to enjoy the live music and fresh air. Guthrie Green 111 E Brady St Tulsa, OK 74103 Phone: 918-574-2421

Big Cabin Senior Exercise Program—Fitness program for seniors held at the Big Cabin Baptist Church gym three times a week, Monday, Wednesday and Friday, from 10 to 11 a.m.

American Legion Post 178 in Grove, OK – Bingo every Saturday evening at 6pm. Family atmosphere. Contact Lee Cathy for any questions at: 901-487-9060

PRYOR DANCE—Every 1st. and 3rd. Thursday of the month. 6:15 pm—9 pm—Cost is \$5.00 per person, Double H Band will be playing. Cookies and Coffee will be serving. It's for seniors but all ages are welcome. Mayes County Nutrition Center 851 SE 9th Pryor (just east of 9th and Elliott intersection)

Apr 22, 2021 - Apr 25, 2021 Bare Bones International Film Festival - The Bare Bones International Film Festival showcases award-winning independent movies, screenplays and musicians. This film festival provides a platform for low-budget, independent movies from local, regional and international filmmakers. The Bare Bones International Film Festival takes place at various venues around Muskogee and features more than 150 movies, various panel discussions, educational semi-

SUDOKU PUZZLES

Fill in the grid with digits in such a manner that every row, every column and every 3X3 box accommodates the digits 1-9, without repeating any.

	7		8	6		5		
				4	3			1
	1	6						4
4	9		7					
	2	3				1	7	
					2		5	9
6						9	2	
7			9	5				
		5		2	8		4	

Hardship level: Moderate

	3	8	5		6		9	
1	4					2		
			1					3
6		4		8			7	
			4		1			
	2			9		4		6
2					3			
		7					8	1
	6		8		9	5	3	

nars, a parade of classic cars, red carpet awards gala, live music and a movie poster art gallery. This grass-roots festival plays host to more than 200 actors, screenwriters, directors and producers. Roxy Theater & various venues, 220 W Okmulgee Ave., Muskogee, OK 74401. Phone: 918-616-1264.

Apr 22, 2021 - Apr 24, 2021 Woolly Weekend at Shepherd's Cross - Woolly Weekend is a "sheep to shawl" festival held at Shepherd's Cross, an authentic working sheep farm, just north of Claremore on scenic Route 66. Come to the farm and watch as the sheep are shorn (given a haircut). Sheep shearing occurs throughout the day. Over 100 sheep will be shorn on the farm this year. Over the three day period, at least three shawls will be created entirely from the wool shorn on the first morning of the event. It is rare to find a true sheep to shawl experience. Hours: Thurs- Sat: 10:00 am - 7:00 pm. Shepherd's Cross, 16792 E 450 Rd., Claremore, OK 74017. Phone: 918-342-5911, or 918-231-6947. Fax: 918-342-5911.

Apr 22, 2021 - Apr 24, 2021 Philbrook Wine Experience - Head to the Philbrook Museum in Tulsa for a wine enthusiast event so huge it takes a year to recover. The Philbrook Wine Experience weekend brings internationally renowned vintners, more than 20 regional restaurants and an impressive auction together under one roof to create one of the top ten wine events in the nation. Wine Walk: Thurs, Apr. 27th 5:30pm - 8:30pm, Wine Seminars: Fri., Apr. 28th 9 am - 2 pm and Sat., Apr. 29th 10 am - 3pm., Trade Tasting: Fri., Apr. 28th 2 pm - 4 pm., Grand Wine Tasting: Fri., Apr. 28th 6pm - 9pm., Vintner Dinner & Auction: Sat., Apr. 29th 5 pm - 11:30pm. Philbrook Museum of Art, 2727 S Rockford Rd., Tulsa, OK 74114. Phone: 918-748-5382.

Apr 23, 2021 - Apr 24, 2021 Crawfish Festival - Get ready for a spring celebration centered on New Orleans eats at the annual Crawfish Festival in Tahlequah. Reserve your crawfish meal in advance, and partake in 3000 pounds of crawfish prepared by the Linney Breaux's Cajun Eatery and Kromer & Baer Pub team. While you eat, be sure to indulge in New Orleans-inspired cocktails, or sip on Louisiana-style beer. After polishing off your final crawfish, play a round of yard games and tune into live music performances at this fun family event. Hours: Friday: 5:00pm - 11:00 pm., Saturday: 12:00 pm - 11:00 pm. Kroner & Baer Pub, 200 N Muskogee Ave., Tahlequah, OK 74464.

Apr 23, 2021 - Apr 25, 2021 Spring Home & Outdoor Living Expo - If you're in the market for some great spring deals, head to Tulsa Expo Square for the Spring Home & Outdoor Living Expo. Held in the River Spirit Expo building, this exciting event will feature a variety of vendors offering great deals on outdoor furniture,

home appliances and all kinds of resources for your next DIY home project. Guests can peruse themed booths to learn more about specializations like tiny homes, upcycling, rescue groups and more. Kid-friendly attractions will also keep the kids entertained at the Spring Home & Outdoor Living Expo. Hours: Friday: 12:00 pm - 7:00 pm., Saturday: 9:00 am - 7:00 pm., Sunday: 11:00 am - 5:00 pm. Tulsa Expo Square, 4145 E 21st St., Tulsa, OK 74114. Phone: 918-605-5480.

Apr 23, 2021 The Airborne Toxic Event in Concert - Rock band the Airborne Toxic Event got its start as a therapeutic vessel for frontman Mikel Jollett. With a full career as a freelance and fiction writer, Mikel seriously launched into songwriting in 2006. Since then, the full band formed, leading to a series of international tours and multiple full-length albums. Hear the band perform a live set as they grace the Cain's Ballroom stage in Tulsa, touring in support of their most recent "Hollywood Park" album release. Hours: Stars at 7:30 pm. Cain's Ballroom, 423 N Main St., Tulsa, OK 74103. Phone: 918-584-2306.

Apr 24, 2021 Monster Chaos - All ages are sure to have a blast at the thrilling Monster Chaos event held at Tulsa Expo Square. Bring the whole family along to watch as extreme monster trucks fight inside the Ford Truck Arena during action-packed quad war racing and big air monster truck battles. The kids can even participate in power wheel races and get in line for exciting rides on real monster trucks during Monster Chaos. Hours: 11am-3pm & 5-9pm. Tulsa Expo Square, 4145 E 21st St., Tulsa, OK 74114.

Apr 24, 2021 ShamRock the 'Ville - The folks behind ShamRock the 'Ville invite guests of all fitness levels to enjoy an energizing run in downtown Bartlesville. While technically a competition, runners are encouraged to have as much fun as they can and go at their own pace. St. Patrick's Day costumes are welcome and runners will receive shouts of encouragement for each block they complete. Hours: Races start at 9am. Downtown, Bartlesville, OK 74006. Phone: 918-337-3703.

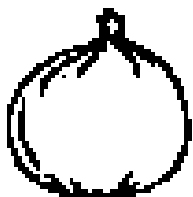
Do You have an event that you would like to share ?

**Community Links of Chelsea
1100 Walnut/PO Box 85
Chelsea, OK. 74016
Ph: 918-789-2862
Fax: 918-789-5296**

Email: links@links.community-options.net

DATA MASTER: Nikki Hamilton





Onion



Potato



Carrot



Cabbage



Tomato



Celery



Zucchini

Granny loves making soup, but first she needs to find all the vegetables hidden in her garden! Find the vegetables and then color the garden!



Getting to know the Lutherans

Who Cares?

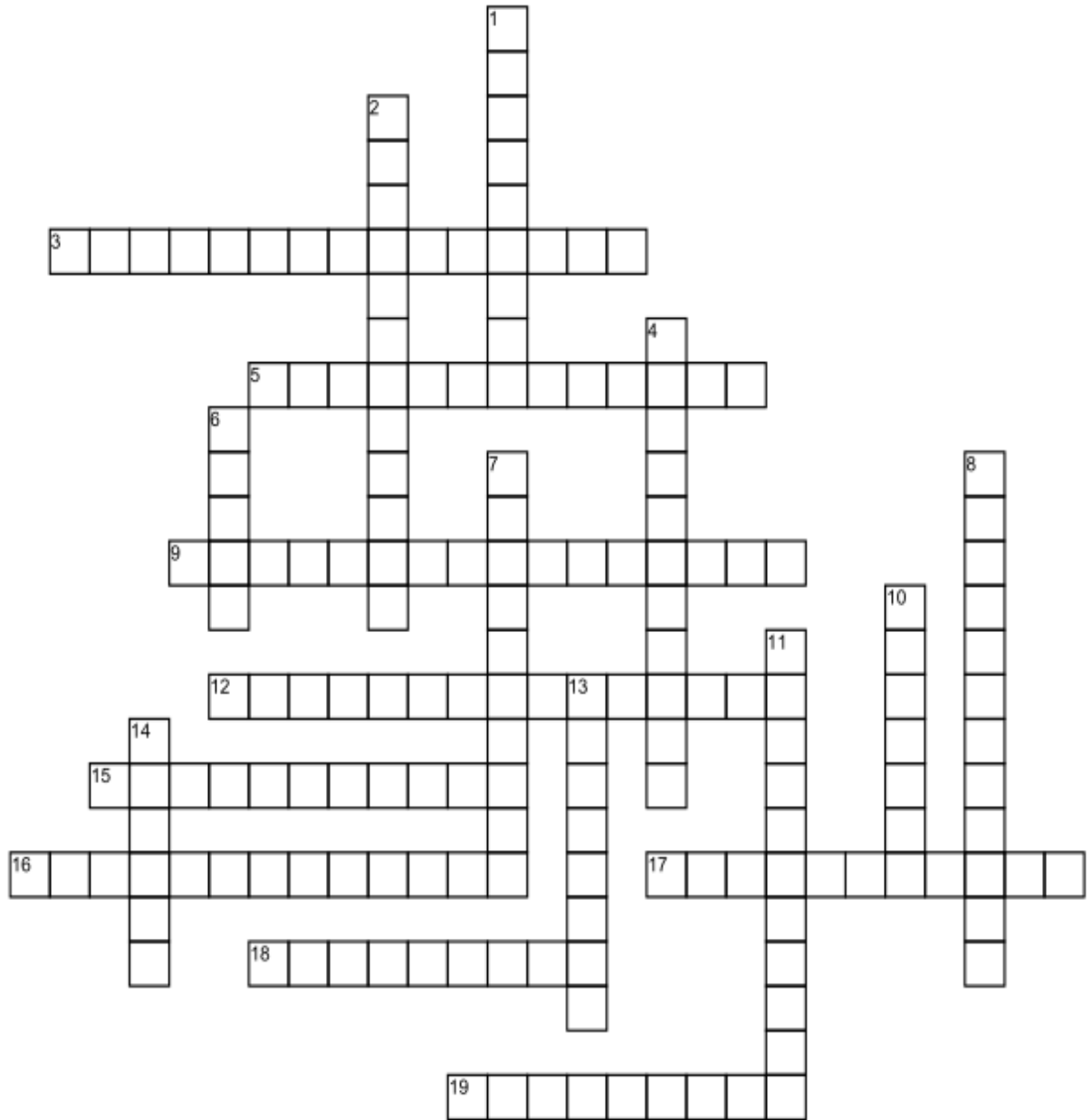
God does! Feeling a bit let down in a month that started with people trying to make a fool of each other? But wait, a few days later we celebrated the resurrection of Our Lord and Savior, Jesus Christ! Easter; the day God made a fool out of the Devil! There Satan was, celebrating with his close fiends, thinking he'd defeated God's plan for our salvation by putting Christ on the cross! I don't suppose we'll ever know who told the evil one the bad news.... bad for him that is....that God had raised Christ from the tomb defeating death; defeating the devil! No longer was mankind condemned, for God's love had provided one to bear our sins and punishments and take them to the grave! And he was raised from the grave as God demonstrated what awaits those who believe! Who cares? God does!!! Amen

<p>Messiah Lutheran Church 460 N. Wilson, Vinita, OK. Sunday School and Bible Class 9:00 a.m. Worship 10:00 a.m. 918-256-3223 Email: messiahvinita@aol.com</p>	<p>St. Paul Lutheran Church Washington and Pine, Fairland, OK. Sunday School and Bible Class 9:15 a.m. Worship 10:30 a.m. 918-676-3059 Email: stpaulluthch@aol.com</p>
<p>Bethlehem Lutheran Church 6911 West 380 Road, Adair, OK 74330 Worship 9:00 a.m. 918-785-2994 Sunday School and Bible Class 10:15 a.m.</p>	<p>Immanuel Lutheran Church 706 Rockwood Drive, Grove, OK. Worship 9:30 a.m. 918-786-4585 Website: www.lutheransonline.com/lo/Groveok</p>
<p>Mt. Olive Lutheran Church 2337 North Main, Miami, OK 74354 Worship 2:00 p.m. (918) 542-4681 Sunday School and Bible Class 3:00 p.m. Email: mtolive@cableone.net</p>	<p>Redeemer Lutheran Church 220 N. Seminole, Claremore, OK. Sunday School and Bible Class 9:00 a.m. Worship 10:30 a.m. 918-341-1429 Email: rluther@sbcglobal.net – Website www.rlcok.org</p>
<p>St. John Lutheran Church 607 South East 9th st. Pryor, OK 74361 Sunday School and Bible Class 9:00 am Worship 10:30 am (918) 825-1926 Email: stjohncpyor@yahoo.com</p>	

*Guests are always welcome.
See you Sunday at worship.*

Crossword Puzzle

Movies



Across

3. Doc Brown & Micheal J Fox played in what movie
5. in what movie the characters Marnie and Sophie played in
9. What was the name of the beetle movie with Buddy Hacket & Dean Jones
12. Movie that starred John Cena watching over children
15. Who played Penguin?
16. Who was Two-Face?
17. who was the family that their house was a Museum
18. Which movie did Samantha wiggle her nose
19. Which famous person played the Riddler in Batman And Robin?

Down

1. Car with a mind of it own(Stephen King)
2. Who gave Snow White the Poison apple
4. Who was the werewolf in the Teen Wolf Movie
6. Who was Jack Nicholson's Character in Batman
7. Movie where John Wayne gets Killed
8. Movie that Robin Williams played a Nanny to see his kids
10. Who was Bela Lugosi
11. Diseased Cats and Dogs
13. What movie of Alfred Hitchcock's was Rod Taylor in
14. Bruce Wayne Played this Character

Word Search Puzzle

Rock Bands

I P N O I T U L O V E R E R E H T E C N I R P F I I
 G H Q U B V B S A Y H A D M U C L Q P W N J J N
 K 5 E V I R D R E V O R E N R U T N A M H C A B
 D I S U I V C T H U V U M A K E Q 5 U N L I P W
 R E N L S E L T A E E B M T 5 N R O T L M K M W 5
 H T H G I N G O D E E R H T T E N T C R M A E R C
 O P G R G H B A P Y Y L N 5 J A K Q E Y D N E G
 O I R O N B B U T T E R F F L L Y B Y 5 R V M N C N E
 K Y H L 5 B L S T H E H O L L I E S E D E F F A L H
 T Q T H E A R C H I E S Q O S T A O R 5 E A L H
 H I F A O L R A G U S E V Y J R V R E N U Q P E
 E F A E S U A M E R I C A V G D O F A B Q I R G
 M O J R Q N P R M O N K E E S W U O N W I K I U
 E R J U E A S S G M C U O S S U E L E D D O A A E
 D E 5 M Q P R Y N 5 J I E S K B E T T E E J C N S
 I I S A C C L O H O N I G R E D 5 G H E H 5 O S
 C G L V G C U O V B I O O A U Y P Y E E Y D T S W
 I N M D T I F D C H H T S H B Q 5 B R E E J R R H
 N E C E I M B S I E Q C A K J B B A E B F F E O
 E R F L Y Y Q N G C C K A T C W A L L I L A U F F O
 S 5 N C N E I A K 5 L I Y E P A P V D P M G F F P
 H E B G K Q D 5 I Y R A L V B M J C E F K E E F
 O K P M L T C C E A T D C Q A U R E E R S N F J E
 W N F A C A S N R E P A Q Q Y Q W T S F S H Q O

- THE DOORS Cream Dr. HOOK & the medicine show REDEYE Paul Revere and the Raiders
- SUGARLOAF THE HOLLIES Prince & the Revolution Jackson 5 Temptations Foreigner
- THE ARCHIES Alice Cooper THE GUESS WHO MONKEES Three Dog Night BEE GEES
- Jefferson Airplane Iron Butterfly Queen Beach Boys Beatles Bachman Turner Overdrive
- America Abba

CryptoQuote Puzzles

Title: Hamburger **From:** Matthew Mc McConaughey

A	B	C	D	E	F	G	H	I	J	K	L	M	N	O	P	Q	R	S	T	U	V	W	X	Y	Z

U T F G X D B F M L F W L H W X L X T U Y Q V E L V
 G T K K U T V W U T F G X D B F M L F W L H
 W X L R X L L K L Y Q V E L V G T K T E L F B Q K

Title: Success and Skydiving **From:** Bill Murray

A	B	C	D	E	F	G	H	I	J	K	L	M	N	O	P	Q	R	S	T	U	V	W	X	Y	Z

U Y Q R Y U G M R C D B I D F R M B N N O O I
 M D T B N K Y D G M L C I U H U F V

Title: Who is a true hero **From:** Zeus

A	B	C	D	E	F	G	H	I	J	K	L	M	N	O	P	Q	R	S	T	U	V	W	X	Y	Z

I L Z K C W C Z E T Y F L P C I Y K Z C X R D
 L W C Y T D C E G W T Y Y L Z C F U L W R K L
 R D L W C Y L Z C F U L W E G W T Y W C I Z L

Remember When



www.shutterstock.com · 103704122



www.shutterstock.com · 1632872473



www.shutterstock.com · 203567107



www.shutterstock.com · 131581400



Community Options, Inc.
website is operational

Pay a visit to our website to learn about what we are doing and how you can help others by getting involved.

If you are seeking employment you can apply for your desired position with us online.

our website can be accessed at:
<https://community-options.net>

To share your story with us contact:
Zia Partovi at 918-244-0457 or 918-789-2862 or email him at links@links.community-options.net

God Created The Dog



On the first day, God created the dog and said. "Sit all day by the door of your house and bark at anyone who comes in or walks past. For this, I will give you a life span of twenty years."

The dog said. "That's a long time to be barking. How about only ten years and I'll give you back the other ten?"

So God agreed.

On the second day, God created the monkey and said. "Entertain people, do tricks, and make them laugh. For this, I'll give you a twenty-year life span."

The monkey said. "Monkey tricks for twenty years? That's a pretty long time to perform. How about I give you back ten like the Dog did?"

And God agreed.

On the third day, God created the cow and said. "You must go into the field with the farmer all day long and suffer under the sun, have calves and give milk to support the farmer's family. For this, I will give you a life span of sixty years."

The cow said. "That's kind of a tough life you want me to live for sixty years. How about twenty and I'll give back the other forty?"

And God agreed again.

On the fourth day, God created man and said: "Eat, sleep, play, and enjoy your life. For this, I'll give you twenty years."

But man said. "Only twenty years? Could you possibly give me my twenty, the forty the cow gave back, the ten the monkey gave back, and the ten the dog gave back; that makes eighty, okay?"

"Okay." Said God. "You asked for it."

So that is why for our first twenty years we eat, sleep, play and enjoy ourselves.

For the next forty years we slave in the sun to support our family.

For the next ten years we do monkey tricks to entertain the grandchildren.

And for the last ten years we sit on the front porch and bark at everyone!



Horton-isms

"I meant what I said and I said what I meant. An elephant's faithful one hundred percent!"

"Don't give up. I believe in your all. A person's a person, no matter how small."

"ASAP. Whatever that means. It must mean, 'Act swiftly awesome pacyderm!'"

"Well, I'll try my best: Sally, Chairman, Hildy, Helga, Hula, Heidi, and Hedy. Miss Yelp. Dr. Larue, Burt from accounting, Mrs. McGillicuddy, Mr. FarFloogin of the Cloogin FarFloogins. And wasn't there an old guy in a shower?"

DATA MASTER: Steven Burdick

Classic Macaroni Salad

This is a salad that everyone seems to love. I always get lots of compliments on this recipe and it is just a pleasing taste that seems to suit everyone.

Prep:20 mins
Cook:10 mins
Additional:4 hrs
Total:4 hrs 30 mins
Servings:10
Yield:10 servings



Ingredients

4 cups uncooked elbow macaroni
1 cup mayonnaise
¼ cup distilled white vinegar
⅔ cup white sugar
2 ½ tablespoons prepared yellow mustard
1 ½ teaspoons salt
½ teaspoon ground black pepper
1 large onion, chopped
2 stalks celery, chopped
1 green bell pepper, seeded and chopped
¼ cup grated carrot (Optional)
2 tablespoons chopped pimento peppers (Optional)

Directions

Step 1
Bring a large pot of lightly salted water to a boil. Add the macaroni, and cook until tender, about 8 minutes. Rinse under cold water and drain.

Step 2
In a large bowl, mix together the mayonnaise, vinegar, sugar, mustard, salt and pepper. Stir in the onion, celery, green pepper, carrot, pimentos and macaroni. Refrigerate for at least 4 hours before serving, but preferably overnight.

Nutrition Facts

Per Serving: 390 calories; protein 6.8g; carbohydrates 49.3g; fat 18.7g; cholesterol 8.4mg; sodium 528.6mg.

By Monika Grabkowska
<https://unsplash.com/photos/nea4T59mTcY>



compassionate about care.
PASSIONATE ABOUT LIFE.

GS H
GOOD SHEPHERD HOSPICE

Free Medicare Benefit

We believe that care during a terminal illness is more than just a diagnosis and treatment.

It's a daily exercise in making this moment, this day... the very best it can be.

918.786.6182

800.787.2226

www.goodshepherdhospices.com



Community Links website is operational

We offer Customized Printing including Vinyl
Printing to fit your your personal &
professional needs

**Now you can place your License Plate
Tag, Sign (plastic, Metal, Magnetic), T-
shirt, and hoodie orders online.**

Order forms for **our other services** will be added to the website as they become available. If you are seeking **employment** you can apply for your desired position with us online at <https://community-options.net>. You can read the current and old issues of **The Little Green Paper** online or download them to read later. We are adding old and current issues as they become available.

You can also place ads on the website. Of course, ADs on the website can be in color and animated and they are live and attract more attention.

Now you can play GAMES

**For any inquiries you can reach us at:
(918) 789-2862 or (918) 244-0457
ask for Debbie or Zia**

our website can be accessed at:
<https://links.community-options.net>



Community Options, Inc. website is operational

Pay a visit to our website to learn about what we are doing and how you can help others by getting involved.

**If you are seeking employment
you can apply for your desired
position with us online.**

our website can be accessed at:
<https://community-options.net>

**To share your story with us contact:
Zia Partovi at 918-244-0457 or 918-
789-2862 or email him at
links@links.community-options.net**

Dot To Dot Picture Puzzle (Connect dots to complete the picture)





Library News

CATOOSA PUBLIC LIBRARY

105 E. Oak (918) 266-1684

Hours:

Monday thru Thursday: 9am to 7pm
Friday: 9am to 12pm & 1pm to 3pm
Saturday: 10am to 2pm
Closed Sunday

CHELSEA PUBLIC LIBRARY

618 Pine (918) 789-3364

Hours:

Tuesday: 10:00am to 7:00pm
Wednesday, Thursday & Friday: 10:00am to 4:00pm
Saturday: 9:00am to Noon Closed Sunday & Monday

CHOUTEAU PUBLIC LIBRARY

307 W Main Phone: 918-476-4445

Hours:

Mon - Fri - 10AM to 5PM
Closed Saturday & Sunday

DELAWARE COUNTY LIBRARY

429 S. 9th St. Jay, Oklahoma (918) 253-8521

Web: www.eodls.lib.ok.us/jay.html

Hours:

Mon., Wed., & Fri. 9:00am to 6:00pm
Tues. & Thurs 9:00am to 8:00pm
Sat. 9:00am to 1:00pm
Closed Sundays and Holidays

GROVE PUBLIC LIBRARY

1140 NEO Loop (918) 786-2945

Toll free in the 918 area code: 1-888-291-8150

Fax: (918) 786-5233

Hours:

Mon., Wed., & Fri.: 8:30am-5:00pm
Tues. & Thurs.: 8:30am-9:00pm
Sat. 8:00am-12:00pm
Closed Sunday

LANGLEY PUBLIC LIBRARY

325 W Osage Ave. (918) 782-4461

Hours:

Mon.-. 1:00pm to 7:00pm
Tue.-Fri. 9:00am to 12:00pm
And 1:00pm to 5:00pm
Closed Sat. & Sun.

MIAMI PUBLIC LIBRARY

200 N. Main (918) 541-2292

Hours:

Sun. 1:00pm
Mon., Wed., Thurs., 9:00am to 8:00pm
Tues., Fri., Sat., 9:00am to 5:00pm

NOWATA CITY-COUNTY LIBRARY

224 S. Pine (918)273-3363 Fax: (918)273-1818

Hours: Mon-Fri 10^{am} -5:30^{pm}; Sat-Sun Closed

PRYOR PUBLIC LIBRARY

505 E. Graham, Pryor 918-825-0777

Hours:

Monday & Thursday: 1:00 PM-9:00 PM
Tuesday, Wednesday & Friday:9:00 AM-5:00 PM
Saturday:9:00 AM-12:00 PM (Noon)

SALINA PUBLIC LIBRARY

420 E. Ferry St. (918) 434-8001

Hours: Tue. 12pm-7pm, Wed. 12pm-5pm,

Thurs. & Fri. 10am-5pm

Closed Saturday, Sunday & Monday

TALALA AREA PUBLIC LIBRARY

106 W Watova St. (918) 275-4540

Hours:

Monday - Friday 2pm to 5pm
Monday and Thursday evening 6pm to 9pm
Saturday 11am to 2pm

VINITA PUBLIC LIBRARY

215 W. Illinois (918) 256-2115

Hours:

Mon., Tues., Wed., & Fri. 11:00am to 6:00pm
Thurs. 11:00am to 7:00pm
Sat. 11:00am to 3:00pm
Closed Sunday

WILL ROGERS LIBRARY

1515 N. Florence, Claremore OK (918) 341-1564

Hours:

Mon & Tues. 9:30am to 8:00pm
Wed. & Thurs. 9:30am to 6:00pm
Fri. & Sat. 9:30am to 5:00pm

31 Closed Sunday

THE LITTLE GREEN SHOP

301 E. Layton Chelsea, OK.

Across From Harp's



918 - 789 - 3676



FISHING EQUIPMENT & SUPPLIES
MINNOWS * NIGHT CRAWLERS
SHRIMP * CHICKEN LIVER
CUT SHAD * RABBIT LIVER
WHOLE SHAD & MORE
DRINKS, SNACKS

Route 66 items for sale

6 POUND BAG OF ICE \$1.50

20 POUND BAG OF ICE \$3.75

A Good Community To Live In!

CHELSEA TERRACE

FOR MORE INFORMATION CONTACT OUR
Rental Office at (918) 789-5200
302 Charlotte Street, Chelsea, OK.

\$200.00 DEPOSIT

\$450 1 bedroom ~ \$500 2 bedroom
ground floor/ handicap accessible
washer/dryer hookup

Paid: water, sewer, garbage, & lawn care
Provided: refrigerator, stove

3 Bedroom House with One Car Garage
1101 square feet

\$590.00 monthly ~ \$350.00 deposit ~ washer/dryer hookups ~ Provided: refrigerator, stove

An Equal Housing Opportunity

SECTION 8 HOUSING VOUCHERS ACCEPTED

Community Links Of Chelsea

1100 Walnut

Chelsea, OK 74016

Ph: (918) 789-2862

Fax (918) 789-5296

Email:

links@links.community-options.net

<https://community-options.net>

Printing: Business Cards, Letterheads – Flat or raised print available. Brochures, Business Forms, and Personalized greeting cards.

Advertising: Links Newsletter, Bi-Monthly distributed by persons with developmental disabilities, Connecting Communities at an affordable rate.

Office Supplies: Self Inking Stamps, Paper products, Toner Cartridges, Printer Cartridges. If we don't have it in stock we will order for you. Most orders complete in 3 days

Vinyl Creations: Customized Hats, T-Shirts, Hoodies, Sweats and more. Stake Signs, Metal Signs, Banners, License Plate, Stickers. Ask for Sammy.

CryptoQuote Puzzles Solution

Title: Hamburger **From:** Matthew Mc McConaughey

Man who invented the hamburger was smart; man who invented the cheeseburger was a genius.

Title: Success and Skydiving **From:** Bill Murray

If at first you don't succeed, so much for skydiving

Title: Who is a true hero **From:** Zeus

A true hero isn't measured by the size of his strength, but by the strength of his heart

By Steven Burdick and Doug WM Stone

Dp TABLE TALKERS

Home of The Mini Billboard

**Let's market your business
with mini billboards
on restaurant table tops.**



*Your color ad will be seen thousands of times
over a two year period.*

Check out the website: www.dptabletalkers.com
email: dptabletalkers@gmail.com Call or Text: 918-640-4286

We will be glad to help you with your marketing needs.

Sudoku Puzzle Easy Solution

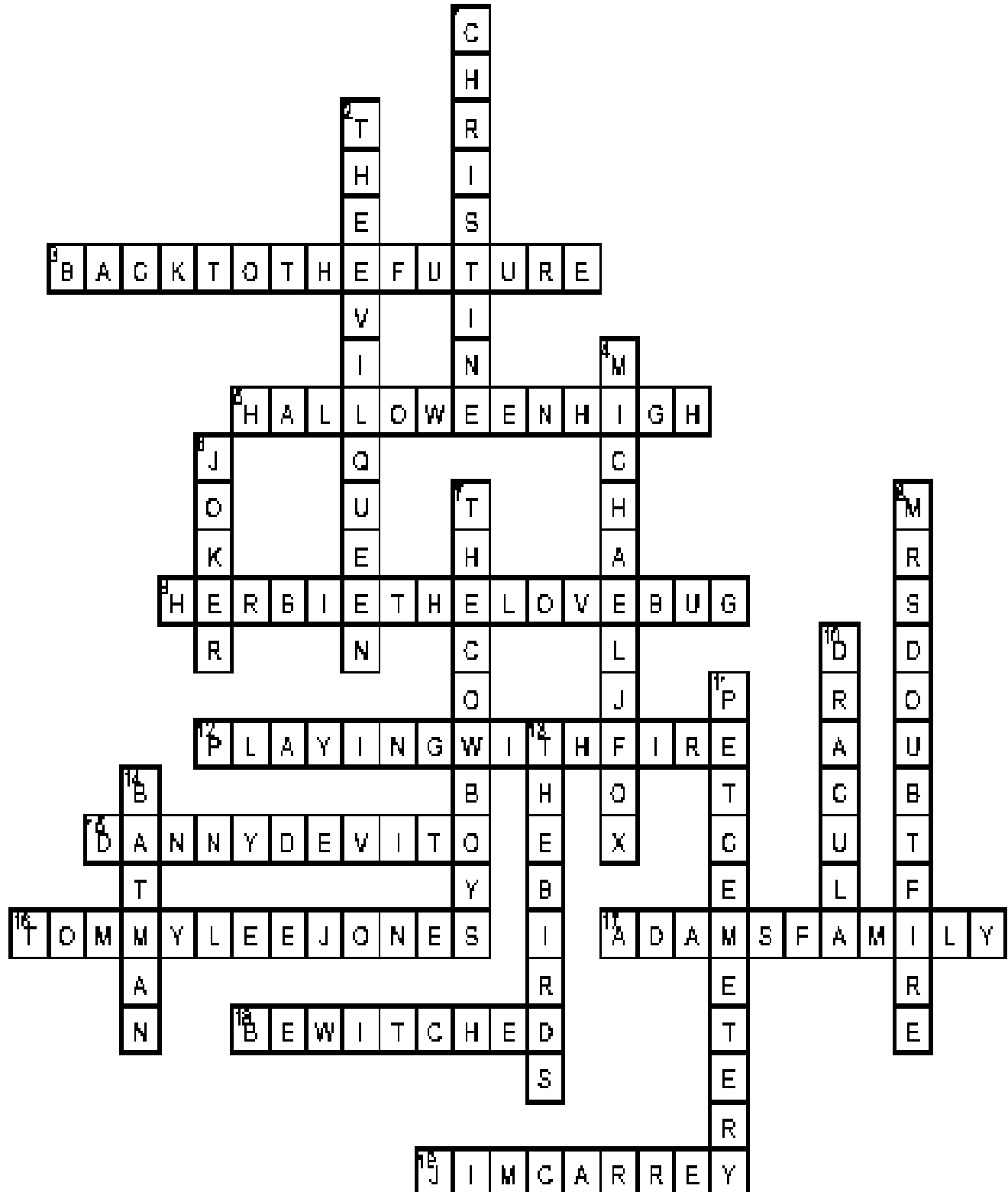
3	7	4	8	6	1	5	9	2
8	5	9	2	4	3	7	6	1
2	1	6	5	7	9	3	8	4
4	9	8	7	1	5	2	3	6
5	2	3	6	9	4	1	7	8
1	6	7	3	8	2	4	5	9
6	8	1	4	3	7	9	2	5
7	4	2	9	5	6	8	1	3
9	3	5	1	2	8	6	4	7

Sudoku Puzzle Moderate Solution

7	3	8	5	2	6	1	9	4
1	4	6	9	3	8	2	5	7
9	5	2	1	4	7	8	6	3
6	1	4	3	8	2	9	7	5
5	7	9	4	6	1	3	2	8
8	2	3	7	9	5	4	1	6
2	8	5	6	1	3	7	4	9
3	9	7	2	5	4	6	8	1
4	6	1	8	7	9	5	3	2

Crossword Puzzle Solution

Movies



**We would like to
thank the following
Businesses for
distributing LINKS**

Adair

Casey's General Store
Woodshed

Afton

Evans Roofing

Chelsea

Chelsea Family Pharmacy
Chelsea Library
Chelsea Post Office
Chelsea Sr. Citizens
Community Links
Dollar General
Harp's Grocery
Jiffy Mart
Lakeside State Bank
Little Green Shop
Main Street Diner

Chouteau

Shoppers Value
Pizza Corral
Creekside General Store

Claremore

Bill's Sporting Goods
Kum N Go (W Will Rogers)
Kum N Go E Hwy 20
Midco Clothes & More
Stillwater Milling
Emerald Care Center

Commerce

Eastwood Manor
Lil' Cafe

Fairland

Fairland Sr. Citizen's

Grove

Eagles Landing
Drakes
Grand Prosthetics & Artificial
Limbs
Grandwood
Mr. M's Convenience Store
Grove Sr. Citizens
Harps Grocery
Tom Cat Corner

Jay

Simple Simons
Delaware County Library
Jay Senior Citizen's

Langley

4 State Insurance
Langley Drug
Reasor's Grocery Store

Miami

Marvin's Grocery
Windridge
Wal-Mart Supercenter
Larry's Barber Shop

Nowata

D&L's
Homeland
Nowata Depot Cafe
Reid's Discount Pharmacy
Nowata Sr. Citizens

Oologah

Pump - N - Petes #15
Tacora Mart (Conoco)

Pryor

Innovations in Hair
Mayes Co. Nutritional Center
Wilkerson Real Estate
Paulie's Donuts
The Book Exchange

Spavinaw

T-General Store

Vinita

Burrough Manor
Carter's IGA
Grand Lake Mental Health
Midco Clothes & More
Sam's Tire
Vinita Post Office
Wood Shed
Young's Tire

Welch

Welch State Bank



Community Options, Inc.
website is operational
Pay a visit to our website to learn about what we are doing and how you can help others by getting involved.
If you are seeking employment you can apply for your desired position with us online.
our website can be accessed at:
<https://community-options.net>

To share your story with us contact:
Zia Partovi at 918-244-0457 or 918-789-2862 or email him at links@links.community-options.net



Now we accept
ADVERTISEMENT
on our **WEBSITE**

<https://links.community-options.net>

Please contact Zia at 918-244-0457
or Debbie at 918-789-2862

We can mail current or past issues to you. The cost of shipping and handling is \$2.00 per issue. If you would like to receive every issue without delay you may pay \$24.00 shipping and handling cost for 6 months or \$48.00 shipping and handling cost for full year.

LINKS

Information

The Links Paper comes out twice a month, the 5th and the 20th of every month. We offer many different advertising options and have competitive pricing. Should you be interested in placing an ad with us you can contact us at the phone number or the email provided below.

Deadlines for ad submission:
5th issue: 25th of previous month
20th issue: 10th of the same month

Community Links of Chelsea
1100 Walnut
Chelsea, OK 74016
links@links.community-options.net
(918) 789-2862
Open:
Monday –Friday 8am to 4:00pm



Community Options, Inc. website is operational

Pay a visit to our website to learn about what we are doing and how you can help others by getting involved.

**If you are seeking employment
you can apply for your desired
position with us online.**

our website can be accessed at:
<https://community-options.net>

Contents of this paper is compiled from available original sources.



Community Links website is operational

We offer Customized Printing including Vinyl
Printing to fit your your personal &
professional needs

**Now you can place your License Plate
Tag, Sign (plastic, Metal, Magnetic), T-
shirt, and hoodie orders online.**

Order forms for **our other services** will be added to the website as they become available. If you are seeking **employment** you can apply for your desired position with us online at <https://community-options.net>. You can read the current and old issues of **The Little Green Paper** online or download them to read later. We are adding old and current issues as they become available.

You can also place ads on the website. Of course, ADs on the website can be in color and animated and they are live and attract more attention.

Now you can play GAMES

For any inquiries you can reach us at:

(918) 789-2862 or (918) 244-0457

ask for Debbie or Zia

our website can be accessed at:

<https://links.community-options.net>



- Auto & Truck Loans
- Home Loans
- Business Loans
- Checking, Savings & CD's
- All of your Banking Needs!

THE BANK OF COMMERCE

789-2567

..... *Your Bank in Chelsea.....*



MEMBER FDIC



EQUAL HOUSING

LENDER